



Bridge Inspection Campaign and Implementation of an Asset Management Tool.

Chile.

CLIENT	ABERTIS Chile
DATE	2015-2016
LOCATION	Chile
FIELD OF ACTION	Maintenance and Asset Management Tools

INES INGENIEROS has carried out the consulting services related to the deployment and implementation of an Asset Management tool to “smart” manage all the civil-works within the 5 road concessions owned by ABERTIS AUTOPISTAS in Chile. ABERTIS AUTOPISTAS is responsible for the maintenance and operation of over 900 structures including bridges, tunnels, retaining walls, toll plazas, earthworks and overhead signaling structures.



The consulting services provided included the following tasks:

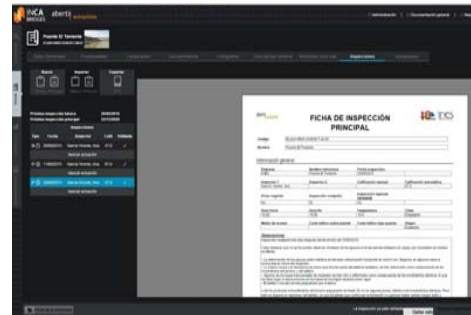
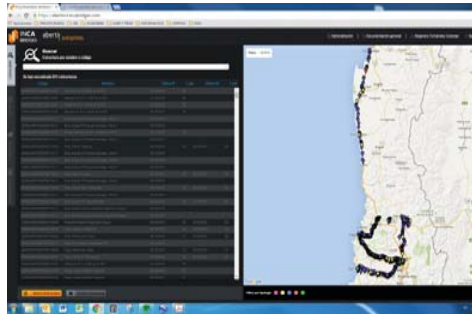
- Software solution services focused to aid in the maintenance of owned civilworks by the implementation of the web application “INCABRIDGES”, creation of a tailored data base and training on the use of the tool.
- Analysis, organization and uploading of all the existing information to the web application related to all the existing civil works.
- Creation of all inventory data related to all the existing civil works.
- Bridge Inspection campaign by the means of a modern methodology based on the use of smartphones and tablets.
- Special post-seismic Bridge Inspection of potentially damaged structures after the September 16th 2015 earthquake that struck the IV Region of Chile.
- Diagnosis reports and repair budgets for every single inspected structure.
- Evolution model for deterioration of the structures



Bridge Inspection Campaign and Implementation of an Asset Management Tool.

Chile.





Bridge Inspection Campaign and Implementation of an Asset Management Tool.

Chile.

modular structuring, INCABRIDGE's implementation is progressive and can be tailored to address specific customer needs.



- Application to validate circulation of extra-heavy vehicles

INCABRIDGES is an open source software application designed by INES INGENIEROS focused on the management of civil infrastructures. It's GIS representation of civil assets, repair campaign planning and O&M cost and management controls by the use of conservation indicators makes it a powerful tool aiming to enhance the yield and performance of both private and public entities in charge of big civil asset stocks. Thanks to its

